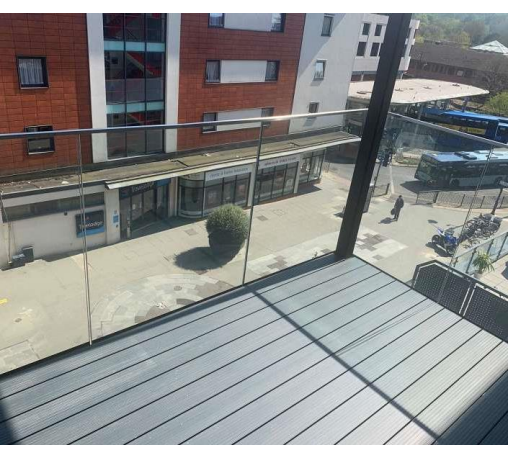


TO LET



HOLDING DEPOSIT (ONE WEEKS RENT) - £275.00

DEPOSIT (FIVE WEEKS RENT) - £1384.00

COUNCIL TAX BAND - C • EPC - B

Kitchen/Breakfast Room

Lounge/Dining Room • En Suite Bathroom

Economy 7 Heating • Roof Garden

Balcony • Cycle Store • Town Location

This magnificent one bedroom apartment benefiting from its own private balcony and shared roof garden. Located in the heart of Horsham town centre close to shops, restaurants, public houses and local recreational parks. The Paperyard lies above the popular gym franchise, The Gym offering easy access to fitness and sport equipment.

Property description: Spacious entrance hall, Open plan kitchen with built in appliances including dishwasher, spacious living area with private balcony. Main bedroom with built in wardrobes. Jack and Jill



PAPERYARD , ALBION WAY, HORSHAM, RH12 1HP
£1,200 PCM



Energy Performance Certificate Energy Rating **B**

Score	Energy Rating	Current	Potential
92+	A		
81-91	B	82	82
69-80	C		
55-68	D		
39-54	E		
21-38	F		
1-20	G		

GROUND FLOOR

ACCOMM.1

Further information on Deposit and Administration Fees available at www.hugginsedwards.co.uk/rental_information

**VIEWING STRICTLY BY APPOINTMENT ONLY
THROUGH THE AGENTS HUGGINS EDWARDS &
SHARP**

LEATHERHEAD LETTINGS OFFICE
3 BRIDGE STREET, LEATHERHEAD, KT22 8BL

01372 455244
info@hesresidential.co.uk



HUGGINS EDWARDS & SHARP RESIDENTIAL LETTINGS AND MANAGEMENT IS A TRADING NAME OF ENGLAND & WALES. REGISTERED NUMBER 07165611. REGISTERED OFFICE: 30-34 NORTH STREET, THEMSELVES AND FOR VENDORS OR LESSORS OF THIS PROPERTY WHOSE AGENTS THEY ARE GIVE ARE SET OUT AS GENERAL OUTLINE ONLY FOR THE GUIDANCE OF INTENDED PURCHASERS OR LES CONTRACT. ALL DESCRIPTIONS, DIMENSIONS, REFERENCE TO CONDITION AND NECESSARY PERM DETAILS ARE GIVEN WITHOUT RESPONSIBILITY AND ANY INTENDING PURCHASERS OR LESSEES REPRESENTATIONS OF FACT BUT MUST SATISFY THEMSELVES BY INSPECTION OR OTHERWISE AS TO

www.hugginsedwards.co.uk

